



# GBBC GSMI

Global Standards Mapping Initiative (GSMI)

---

## ABOUT THE GSMI FELLOWS

GBBC has partnered with select academic institutions actively involved in blockchain and digital asset research to launch the GSMI Fellows Program, an eight-month fellowship for exceptional students from partner institutions to contribute to GSMI research and analysis

---

### PREVIOUS COHORTS

#### GSMI 5.0



**Adrian Matak**  
*London School of  
Economics and  
Political Science*



**Namrritha  
Senthilkumar**  
*The George  
Washington University*

#### GSMI 4.0



**Joseph Haar**  
*Queens College  
CUNY*



**Ishraq Huda**  
*Queens College  
CUNY*



# GBBC GSMI

Global Standards Mapping Initiative (GSMI)

## GSMI 3.0



**Lucy Andrew**

*University of  
Birmingham*



**Zach Hall**

*University of  
Arkansas Walton  
College of Business*



**Naina  
Srivastava**

*University of Zurich*



**Palchen  
Wangchuk**

*Nagoya University of  
Commerce & Business*



**Michelle Yap**

*Singapore Management  
University*



# GBBC GSMI

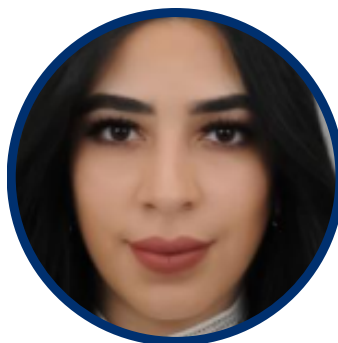
Global Standards Mapping Initiative (GSMI)

## GSMI 2.0



**Yoojin Bang**

*Korea Advanced  
Institute of Science  
& Technology  
(KAIST)*



**Walaa Basem  
Al-Shehab**

*University of  
Bahrain*



**Riley Fay**

*Portland State  
University*



**Lance Helton**

*Miami University  
of Ohio*



**Mya McCalmont**

*University of  
Dundee*



**Mathias  
Nwokejiobi**

*University of  
Wyoming*



# GBBC GSMI

Global Standards Mapping Initiative (GSMI)

## GSMI 2.0



**Janessa Phua**  
*Singapore  
Management  
University*



**Robert Ripley**  
*Portland State  
University*



**Ong Shuyin**  
*Singapore  
Management  
University*



**Alex Stan**  
*Miami University  
of Ohio*



**Anna Wylie**  
*University of  
Dundee*



**Andrew Young**  
*Singapore  
Management  
University*





# GBBC GSMI

Global Standards Mapping Initiative (GSMI)

## PARTNER INSTITUTIONS



University of Zurich<sup>UZH</sup>

